

WHERE TRADITION MEETS NEW POSSIBILITIES



CopperBrookHomesCT.com

Our Developer

Roswell Development - Jonathan Vosburgh

Our approach is simple —incorporate the unique characteristics of the surrounding area and commit to building the very best home. As a member of the Home Building Industry with numerous awards, we focus on superior craftsmanship and energy efficient homes— our ultimate commitment is to the lifestyle our homeowners enjoy when they move into our homes. For over 25 years, Roswell Associates has earned a reputation as one of the most respected homebuilders in the Farmington Valley

www.roswell-associates.com

Our Communities



Brighton Park, Bloomfield



Billingsgate, Simsbury



South Pond, Bloomfield



Worthington Ridge, Bloomfield



Thrall, Suffield

History of the Copper Brook Name



Of all the settlers who came to the Granby during the onset of copper mining and iron making in 1723, the most notable was Samuel Higley. By the spring of 1733, Samuel Higley had begun mining copper on his own property. Since Colonial times Higley has been associated with the Connecticut copper tokens first produced in 1737 making him the first minter of copper coins in the English America.

Roughly five varieties of Higley Coppers pictured either an antlered deer, broad ax, a trio of sledge hammers with a crown above each, the word Connecticut, a pointing hand, or a combination of these all which are indigenous to the Granby area can still be found on display at the Connecticut State Library.

Copper Brook Site

- A community of 34 homes, with 32 newly constructed homes and 2 antique properties with exterior maintenance provided by the homeowner's association.
- Located on over 14 acre site in the center of Granby
- Public water, natural gas
- Community sidewalks



Models & Floor Plans

- Three Craftsman style homes all with a 2-car garage
- First floor master bedroom available on selected models
- 2-4 bedrooms homes to choose from
- Customize your home the way you want to live



The McLean



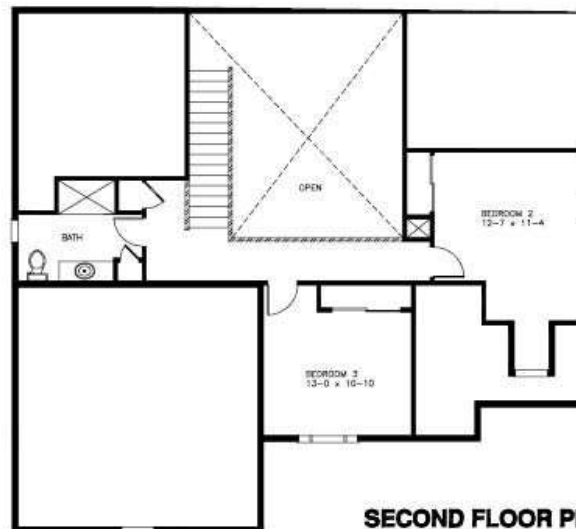
First Floor: 1581 sqft
Second Floor: 699 sqft
total: 2280 sqft

Prices starting at \$445,000

- Features:
- Flexible open floor plan
 - First floor master suite
 - Formal dining room or study
 - Great room with gas fireplace
 - Granite and stainless kitchen
 - First floor laundry
 - Two bedrooms and full bath on second floor
 - Front porch
 - Patio
 - 2 car garage



FIRST FLOOR PLAN



SECOND FLOOR PLAN



The Higley



First Floor: 1432 sqft
Second Floor: 610 sqft
total : 2042 sqft

Prices starting at
\$434,900

- Features:
- Flexible open floor plan
 - First floor master suite
 - Formal dining room or study
 - Great room with gas fireplace
 - Granite and stainless kitchen
 - First floor laundry
 - Two bedrooms and full bath on second floor
 - Front porch
 - Patio





The Copley - 20 Ranch



total: 1504 sqft

Prices starting at \$395,000

Features:

- Flexible open floor plan
- Great room with gas fireplace
- Granite and stainless kitchen
- Two bedrooms
- Master bedroom suite
- Front porch
- Patio
- 2 car garage



Pricing

Base Price

- The McLean \$445,000 (2280 square feet)
- The Higley \$434,900 (2042 square feet)
- The Copley -20 Ranch \$395,000 (1504 square feet)

Please stop by our Sales Center for more information on available homesites, model pricing and home discounts.

Non-Binding Reservations \$1000

Prices subject to change without notice



Now Taking Reservations



P Penny
Gitberg
Home is where your story begins

Broker: Listing Agent

Cell: 860-803-4254

Email: pennygitberg@bhhsne.com

Web: www.pennygitberg.bhhsneproperties.com

